

Process Alert – Radiator Fan Differentiation



Process Alert – Radiator Fan Differentiation

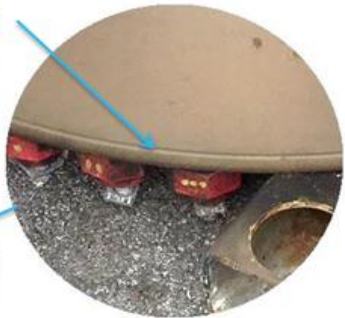
Section	Detail
Author	Denise Braeager Date: 03/07/2016
Description	5GDY30C6 and 5GDY33B1 Radiator Fans are visually similar, have identical mounting and electrical connections, but do not function correctly in the wrong loco. Both Factory and CSC's have installed the wrong part number resulting in faults, rework, and road failures.
Root cause	Operators do not always look for and observe PN's. Visual difference exists but was not widely communicated.
Control Action/	<p>Use the stenciled part number and note the presence of a Hub Groove to verify the correct part number before installing replacements. Be sure to match the replacement to the Fan being removed.</p> <p><u>For all Tier 4T and CSX T3 locos (VSPD):</u></p> <ol style="list-style-type: none">1. The last 4 digits of the part number (33B1) are stenciled on the top of the fan.2. A Hub Groove is machined into all 5GYA33B1 Radiator Fans. <p><u>For D8, D9, AC44, T2, T3 (except CSX), and T4C locos:</u></p> <ol style="list-style-type: none">3. The last four digits of the part number (30C6) are stenciled on the top of the fan hub.4. There is NO Hub Groove on 5GYA30C6 Radiator Fans.
DMR #	N/A, Factory mix-ups will be corrected by FMI.
Component #	N/A
Loco Family	All GE FDL and EVO locomotives with 5GYA30C radiator fans. All T4T and CSX T3 locomotives with 5GYA33B radiator fans.
Part Numbers	5GYA30C6, 5GYA30C6R, 5GYA33B1, 5GYA33B1R

Locos: T4T, CSX T3 Radiator Fan: 5GYA33B1

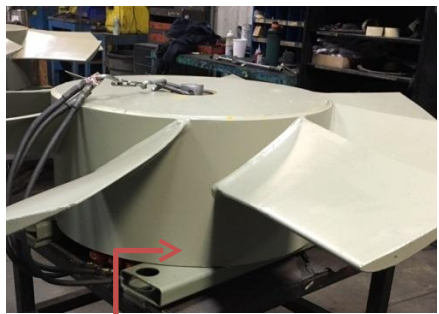


VSPD only

Hub Groove



Locos: D8, D9, AC44, T2, T3 (except CSX), T4C Radiator Fan: 5GYA30C6



No Hub Groove

Non-VSPD

